

MAXTIME RM

RAMP METER CONTROL SOFTWARE



OVERVIEW

Q-Free MAXTIME rm is an award-winning freeway ramp meter control software. The solution optimizes traffic flow at freeway on ramps and increases driver safety while reducing emissions and improving the environment.

Ramp metering is identified as one of the most cost-effective traffic management strategies for freeway operations. Proven to reduce mainline congestion and overall delays, it increases mobility through the freeway network and traffic throughput by efficiently metering vehicles on ramps.

MAXTIME rm communicates with multiple Q-Free solutions:

- MAXTIME ic
- MAXTIME cv
- And more

It can be peered with other ramp meters, signal controllers, and field devices to enable data sharing and integrated corridor management.

With a rich set of industry standards and advanced functionality, MAXTIME rm is intuitively designed to simplify complex functions, and its Linux-based design facilitates memory and future processing power expansion.

BENEFITS

- Minimize congestion by controlling traffic flow onto freeways and coordinating with nearby intersections
- Reduce collisions by breaking up groups of vehicles entering the freeway competing for the same limited gaps in traffic
- Monitor and modify timings via web browser from virtually any PC, tablet, or smart phone
- Support up to 16 mainline and 16 metered lanes, and 64 detectors
- Store and toggle between hundreds of timing databases on the controller



OPTIMIZE
FREEWAY
TRAFFIC FLOW



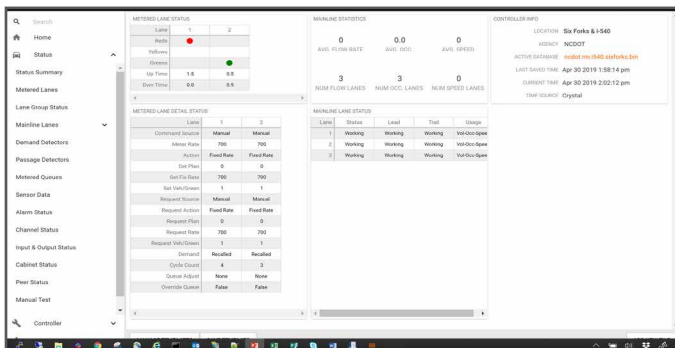
REDUCE
CONGESTION AND
DELAYS

INDUSTRY-LEADING FEATURES

- Meets the existing NTCIP 1207 v02.06b specification as well as ATC v5.2
- Operate in local traffic responsive mode by TOD
- Adjust metering rates using volume and occupancy triggers to manage queuing
- Shutdown metering in case of overflow using unique shutdown triggers
- Easily and automatically update software via network or USB flash drive – no need for terminal servers or proprietary installer programs
- All data is exposed to allow for any authorized third-party application to access or display ramp meter information

MAXTIME rm supports:

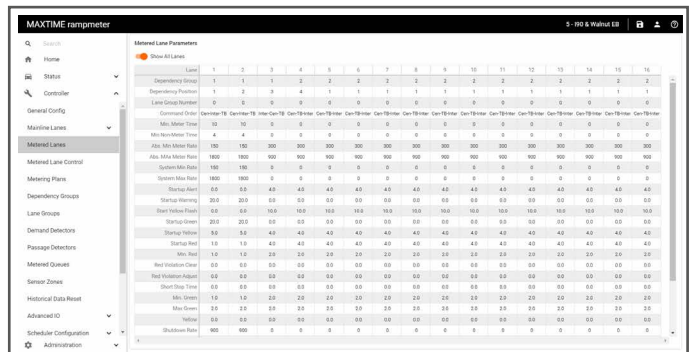
- Wavetronix HD125 side fire radar for speed, volume, occupancy, 85% speed data
- Serial and/or Ethernet communications
- Network Time Protocol (NTP) and all other GPS-based clock inputs for time synchronization
- Local intersection integration
- Peer-to-peer communications with Advanced Logic Builder



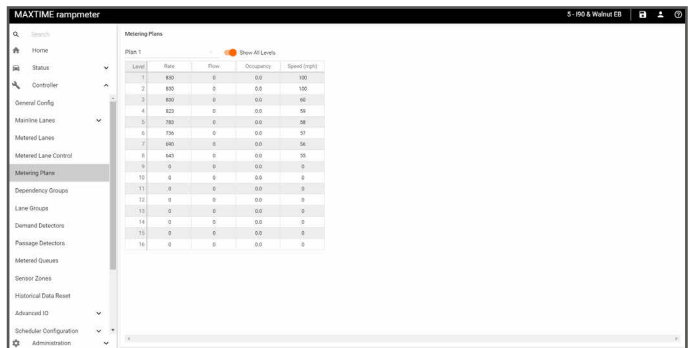
MAXTIME rm home screen

STANDARD FEATURES

- Runs on Linux O/S and the ATC platform
- Supports logging volume, occupancy and speed data to the local controller or USB drive for later analysis
- Full NTCIP MIB supplied with software license
- Pre-configured or user-defined cabinet support (332, 336, TS 1, TS 2, ITS)
- Expanded capabilities support Bluetooth readers and local data processing
- Includes offline volume/occupancy testing tools for lab simulation of metering functions
- Intuitive and advanced user logic programming



Supports up to 16 separate metering plans



MAXTIME rm programming display

